

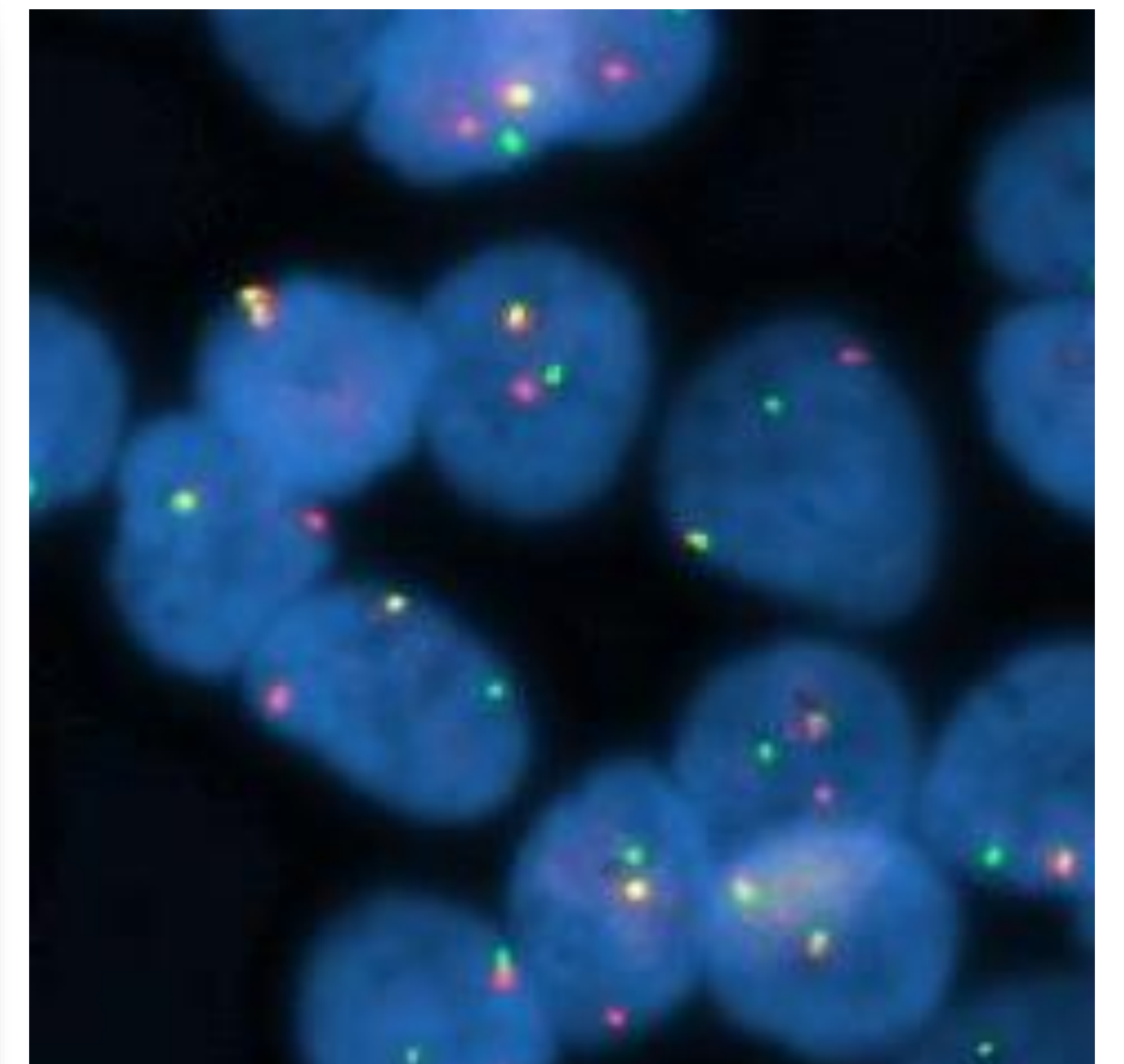
Formalin-Fixed Paraffin-Embedded (FFPE) FISH workshop

10am – 2pm 18th March 2024, Woburn House, London

FISH on FFPE tissue presents particular challenges for processing, analysis and reporting. Errors in analysis and interpretation could result in mis-diagnoses and impact on patient management.

GenQA invite you to join our team of FFPE FISH experts at this exclusive educational workshop

- Start from the basics and increase your knowledge and understanding of the FISH technique
- Receive assistance with tumour cell identification from an expert histopathologist
- Learn troubleshooting tips to help you accurately report FFPE samples
- Check your understanding of the limitations of FISH on FFPE
- Increase your awareness of specific requirements for particular tumour types



Open to any laboratories registered with GenQA!

- Free of charge to attend*
- Limited availability for in-person attendance
- Registration closing date for in-person attendance: Friday 1st March 2024. Please register using the link below:

<https://www.surveymonkey.com/r/GenQALondon2024workshop>

Virtual attendance will be possible, details to follow on the website

*£100 will be added to the laboratory invoice in case of non-attendance to cover costs.

For more information got to www.genqa.org/news or follow us on Twitter and LinkedIn.